



匡智會
Hong Chi Association

匡扶智障 FOR people with intellectual disabilities

Hong Chi Lions

Morninghill School



Address: 159 Blue Pool Road, Happy Valley, Hong Kong.

Telephone No.: (852) 2575 4789

Fax No.: (852) 2574 1943

E-mail: lions@hongchi.org.hk

Website: www.hclions.edu.hk

School Information

Hong Chi Lions Morninghill School is the first school which set up by Hong Chi Association in 1965. Our school is a full-time government-aided special school, which serves the children with mild intellectual disabilities aged 6 or above. 12-year quality education is provided from Primary 1 to Secondary 6.

Facilities

Our school has 4 levels, facilities such as: classrooms, home economics room, computer room, music room, speech therapy room, ceramics room, design and technology room, nursing room, library, guidance room, sensory integration room, multi-purpose room, independent living skills room, hall, playgrounds and climbing wall. For teaching purposes, all facilities are equipped with air-conditioner, Wi-Fi, computer and Interactive Touch Pane.



Library



Independent Living Skills Room



Multi-Purpose Room



Classroom of Primary class



Hall



Classroom of Secondary class



Big Playground



Climbing Wall
P.1



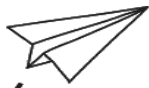
Small Playground

Our Mission

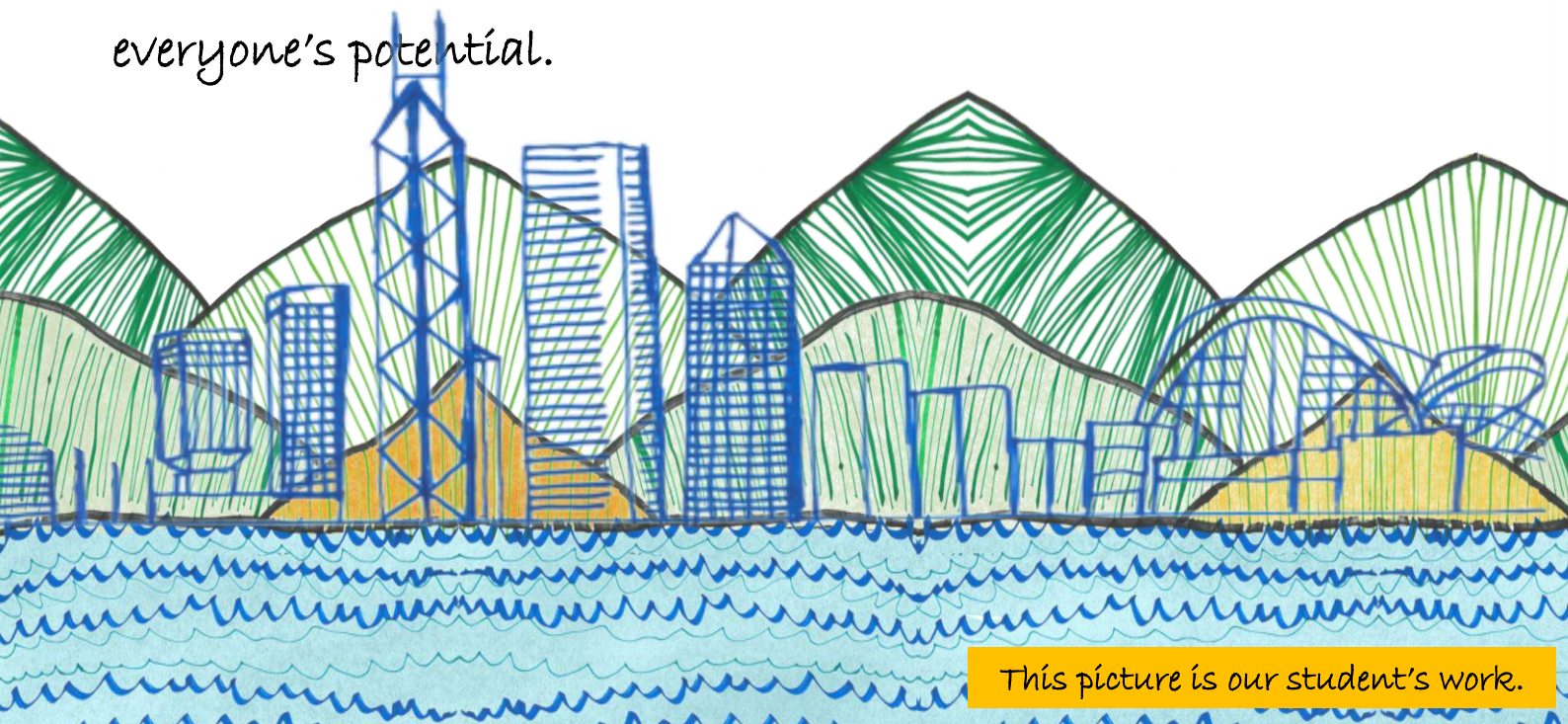


Our school adheres to the mission of Hong Chi Association: "For people with intellectual disabilities". "Hong" in Chinese means "to assist", while "Chi" refers to "the intellect". Our emphasis is to assist the children with intellectual disabilities in the development of their potential to the full. We are dedicated to quality service in educating, training and empowering each of them.

Core Values



Love is our base, which nurtures different growth stories. Life affects life, develop students' positive values and attitudes; teach students in accordance with their aptitude, achieve everyone's potential.



This picture is our student's work.

School's Aim of Education

1. Students:

Develop students' physically, intellectually, socially, spiritually and emotionally. Based on students' personalities, realize their potential and enhance their independent living skills to handle daily life and work. Integrate into the community, be a good citizen.

2. School administration:

Strengthen the efficiency of administration and management by establishing a complete management structure and computerize the school administration work. Team spirit and participation of decision making has been enhanced by fostering an open and helpful working environment.

3. Resources:

Provide a joyful learning atmosphere by making good use of resources to improve school environment.

4. Staff:

"Student oriented" is our education principle. Enhance the sense of mission by encouraging our staff to continue education, maintain profession and enjoy challenges.

5. Parents:

Promote communication between parents and school and build positive cooperation by offering appropriate guidance and support.

6. Community:

Enhance connections between school and community, enthusiastically take part in and hold community educational activities to boost the awareness of mentally handicapped persons' needs and rights.

Major Concerns 2020-2021

Target 1. Optimize school-based curriculum structure, helps students build up a solid knowledge foundation for progressing through various stages of learning.

- 1.1 Intensify 12 coherence curriculum structure.
- 1.2 Focus on developing school-based life planning education, enable students to have a whole-person development.
- 1.3 Push forward STEM and information technology education, organize cross-curriculum teaching and learning activities.

Target 2. Strengthen learning support pattern, catering for learners' diversity.

- 2.1 Investigate different teaching and learning strategies to improve students' active and self-learning.
- 2.2 Through interdisciplinary team collaboration, formulate all levels of guidance strategies to support students' growth.

Target 3. Towards values Education, create a positive school culture and offer students with a balanced learning opportunities.

- 3.1 Plan "school-based students' core values", equipped students with independent and autonomy ability.
- 3.2 Enrich students' sport experience, and offer students balanced learning opportunities.

School Based Life Planning

Our school carries out "Life Planning" to strengthen the support system for students so that they can pursue their interests and exhibit their potentials. Based on students' needs and abilities, let them exhibit their potentials, and build up a healthy living style, so that they can achieve self-actualization in the future and obtain a quality life and contribute to the society.

School-based Life Planning is divided into three aspects:

1. Academic: Cater for the differences of students in Core subjects. Training focus on the Generic skills / key skills based on students' specific needs.
2. Experience: Through participating diversified activities, students can obtain basic knowledge about future career and build up self-determination abilities.
3. Pre-vocational Training: Build up the concept of work. Work hard to achieve the goals. Obtain the skills and develop positive attitude on work.

我的生涯規劃

20-21 年度目標：
 P005 對學校有歸屬感，例如：喜歡學校的活動、環境、老師等，會主動留意學校發生的事。
 P071 能在學校表現日常自我管理的能力，例如：把用完的物料放好，帶備需要的用品等。
 P195 與人傾談時，能保持合宜的目光接觸及身體距離。

單元一目標

語文

1. 以圖配字學習常見的地方名詞
2. 按筆順書寫自己名字「林」

數學

1. 能數出10以內物品數量的數紐
2. 能比較10以內數值的多少

自閉症兒童輔導教學

學生能遵守基本的課堂規則，如：安坐在自己的位置上，離開座位前先舉手請準老師，使用自己的文具及用品，吃東西前及去洗手間後要洗手等。

職業治療

1. 在成規層面提升專注力及衝動控制。
2. 提升小手肌能力，提升手部功能。

言語治療

運用「有/無」概念用於句子中以比較不同

德育

P05：目標時能有合適的正面意識，能注重個人衛生。

<p>我的反思</p> <div style="display: flex; justify-content: space-around;">  </div> <p>簽署： 日期：</p>	<p>老師評語</p> <p>簽署： 日期： 老師印屬</p>
<p>家長評語</p> <p>簽署： 日期：</p>	<p>簽署： 日期：</p>



Hong Chi Lions Morninghill School
 匡智獅子會晨崗學校

我的生涯規劃

學程 · 職涯 · 經歷

姓名：_____

班別：初小A

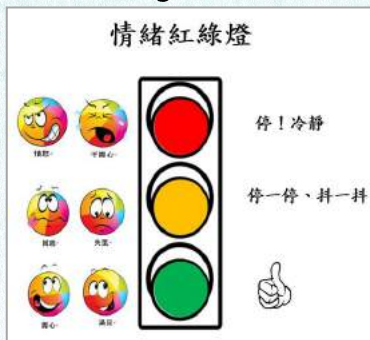
負責班主任：_____



Remedial Teaching Programme for Children with Autism

Collaborating with a local university, teaching aids on Theory of Mind 1, 11 & 111 have been developed for children with autism. By training, they would:

- ◆ understand more feelings and responses
- ◆ of the characters in different scenarios
- ◆ empathize with different characters in various scenarios
- ◆ find the reasons of causing different emotions step-by-step
- ◆ tell the feasible solutions in various scenarios
- ◆ generalize the scenario solutions in daily life



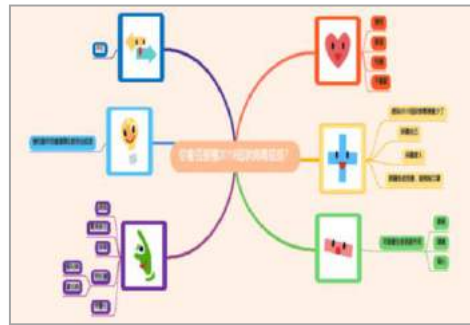
Student Support Programme for Non-Chinese Speaking Students

A set of teaching materials related to Chinese language education for non-Chinese speaking (NCS) students has been designed, including reading materials, worksheets and audiovisual reference materials. Learning groups are also provided in order to offer students more opportunities to pay attention and learn Chinese language. Besides, different outside training can let students to apply what they have learnt about Chinese language in real life environment effectively.



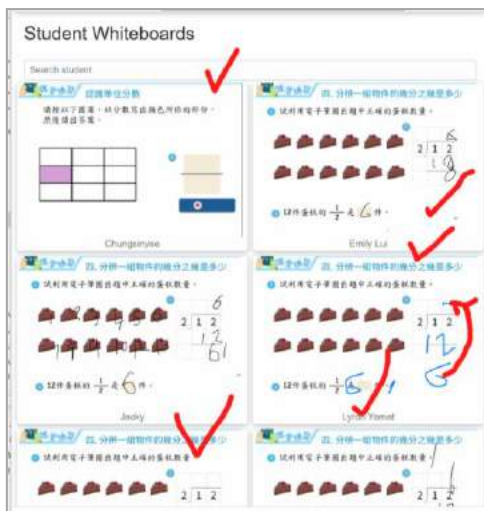
Thinking Skills

Since 2001, a school-based programme on Thinking Skills has been implemented for the students in stages. We teach them to apply useful skills like mind map, GWS, flow chart and 5-step problem-solving skills etc. in different scenarios. The learning strengthens their skills on thinking and problem-solving in daily life.



E-Learning

With the rapid development of information technology, computer is common to be used during lessons. Our school keeps boosting the development of information technology education. For teaching purposes, Wi-Fi network has been optimized so as to build a mobile academic environment. Personalized tablets like "iPad" has been allocated to every student by stages. Other learning materials like audiovisual e-books and school based booklets are employed to initiate students' self-learning interest and elevate the reading atmosphere within the campus. Besides, various apps and online teaching materials are used to reinforce students' learning interest and lesson's interaction.



Published: March 2021